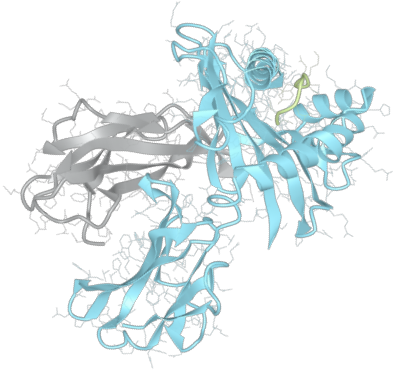


# Product datasheet



## sHLA-A\*24:02bio

A\*2402, A2402, A\*24, A24, A24

<b>Serological Name</b>	A24
<b>Peptide Load</b>	Endogenous
<b>Modification</b>	Unmodified
<b>Conjugation</b>	Biotin
<b>SKU</b>	A2402bio

### Product Description

<b>Allele Name</b>	A*24:02 B2m
<b>HLA Class</b>	HLA Class I
<b>HLA Gene Locus</b>	HLA-A
<b>Alternative Allele Name A Chain</b>	A*2402, A2402, A*24, A24, A24
<b>Alternative Allele Name B Chain</b>	-
<b>Description</b>	Recombinant, truncated Class I soluble Human Leukocyte Antigen (sHLA), naturally folded and glycosylated, loaded with endogenous peptides.
<b>Serological Name</b>	A24
<b>Serological Split</b>	A9
<b>Bw4/Bw6 Assignment</b>	Bw4
<b>Bw4/Bw6 Sequence</b>	NLRIALR
<b>Allele Frequency [World Population]</b>	
<b>A chain</b>	12.80%
<b>B chain</b>	-

### Associated products

[A2402](#)  
[A2402pe](#)

## Product Specification

Product name	HLA-A*24:02bio
HLA Species	Human
Host Cell Line Species	Human
Clone Designation	B8D5
Tail Specification	VLDL
Peptide Load	Endogenous
Modification	Unmodified
Conjugation	Biotin
Complexity	Monomer
Protein Format	Recombinant, truncated, soluble, non-modified, biotinylated, endogenously loaded
Storage Temperature	4 °C (This product should be stored undiluted)
Form	Liquid
Concentration	300.0 µg/µl
Formulation	PBS/0.02% Sodium Azide
pH	7.4
Purification Method	Affinity Chromatography
Grade	Research Use Only [RUO]
Authentication Verification	Sequence Based Typing

## Protein Sequences

Alpha Chain Sequence	GSHSMRYFST SVSRPGRGEP RFIAVGYVDD TQFVRFSDSA ASQRMEPRAP WIEQEGPEYW DEETGKVKAH SQTRENLR I ALRYYNQSEA GSHTLQMMFG CDVGS DGRFL RGYHQYAYDG KDYIALKEDL RSWTAADMAA QITKRKWEAA HVAEQRAYL EGTCDVGLRR YLENGKETLQ RTDPPKTHMT HHPISDHEAT LRCWALGFYP AEITLTWQRD GEDQTQDTEL VETRPAGDGT FQKWAAVVVP SGEEQRYTCH VQHEGLPKPL TLRVSVSTDD DLA
Beta Chain Sequence	IQRTPKIQVY SRHPAENGKS NFLNCYVSGF HPSDIEVDLL KNGERIEKVE HSDLSFSKDW SFYLLYYTEF TPTEKDEYAC RVNHVTL SQP KIVKWRDRM

## Related Products

[A2403bio](#)  
[A2407bio](#)  
[A2302bio](#)  
[A0201bio](#)

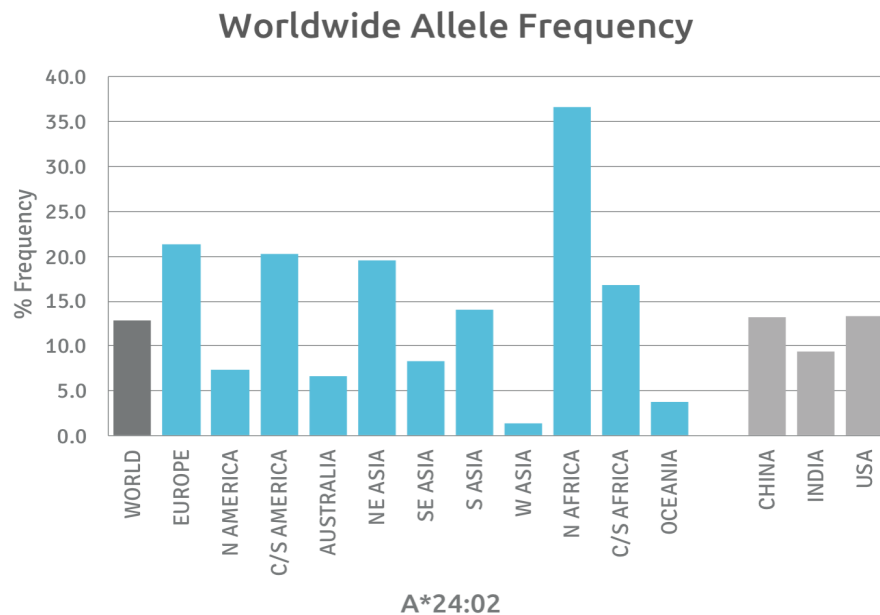
## Applications

- HLA Sandwich ELISAs
- HLA Direct ELISAs
- HLA-Sera Antibody Assays
- HLA Controls in ELISA Assays
- HLA Assay Standards
- HLA Blocking Assays
- HLA Neutralizing Assays
- HLA Competition Assays
- HLA Bead Assays
- HLA Immunization Procedures

## Recommended Antibodies

- W6/32
- Anti-B2m

## Allele Frequency



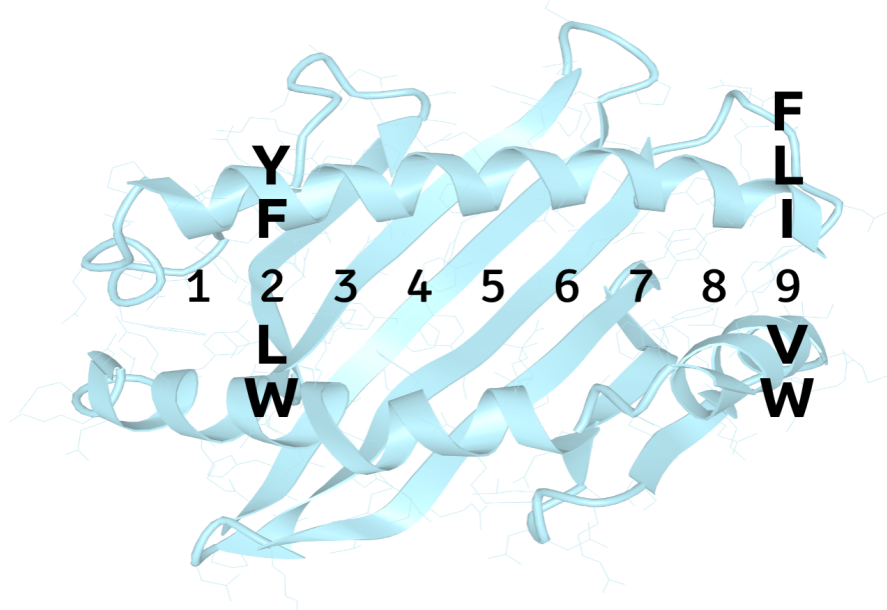
**Please note:**  
ALL PRODUCTS ARE FOR RESEARCH USE ONLY. NOT FOR COMMERCIAL USE IN DIAGNOSTIC PROCEDURES.  
For more information, please visit our Policies section on our website. For licensing inquiries, please contact

[licensing@hlaprotein.com](mailto:licensing@hlaprotein.com)



## Motif

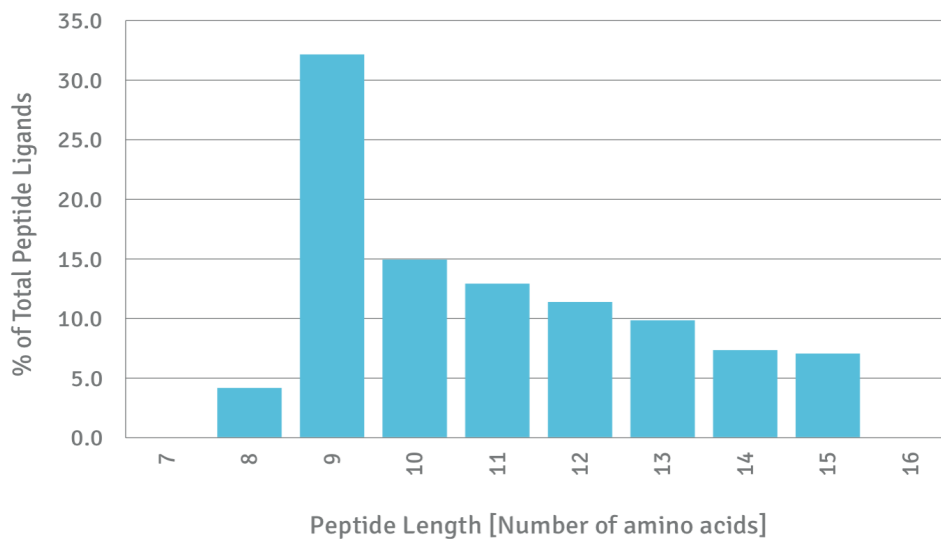
### A\*24:02 BINDING MOTIF



## Length Distribution

### HLA Length Distribution

**A\*24:02**



Please note:

ALL PRODUCTS ARE FOR RESEARCH USE ONLY. NOT FOR COMMERCIAL USE IN DIAGNOSTIC PROCEDURES.

For more information, please visit our Policies section on our website. For licensing inquiries, please contact

[licensing@hlaprotein.com](mailto:licensing@hlaprotein.com)

